

The number of Users that can simultaneously run the GASWorkS software is dependent on the license style purchased. This number is referred to as the Application Limit. A Single-User License allows only one User at a time. A Limited Network License allows a fixed number of Users, which is dependent upon the purchase agreement. Licenses with an unlimited number of Users are also available.

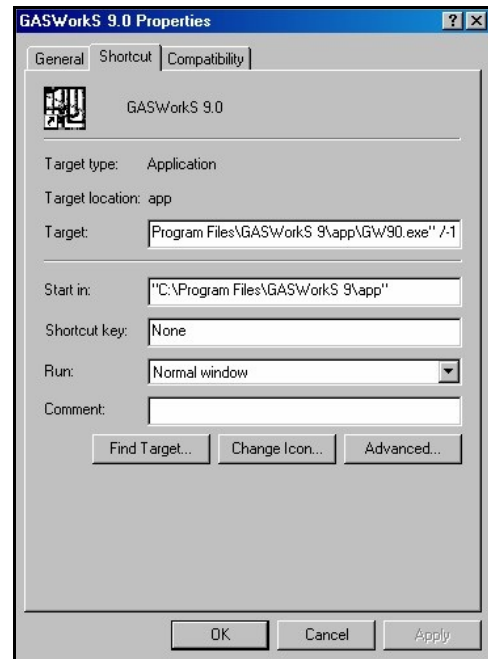
When GASWorkS is executed, it checks the number of Users currently using the software. If the Application Limit is not exceeded, the software will be started. If the Application Limit is exceeded, a warning message will appear.

If GASWorkS is abnormally terminated, the User count may become corrupt and GASWorkS may erroneously report the number of current Users. If this occurs, use the following procedure to prevent future display of the warning message.

- From the Windows desktop, right-click on the *GASWorks 9.0* icon.
- Select the *Properties* item from the pop-up menu list.
- The GASWorkS 9.0 Properties screen will be displayed. Select the *Shortcut* tab.
- In the *Target* field, place the mouse cursor to the right of the closing quote ("). Type a space, a forward slash (/), and a negative one (-1). The data field should look similar to the following:

"\Program Files\GASWorkS 9\app\GW90.exe" /-1

- Select the *Apply* command button, then select the *OK* command button.
- Restart the GASWorkS program.



Note - On 64-bit machines "Program Files" will be replaced with "Program Files (x86)".

Getting Help

Hours - Our normal work hours are 8:00 A.M. to 5:00 P.M. Mountain Time, Monday through Friday. However if you have a problem, please try at any time, we may be in.

By Telephone - Telephone: (719) 578-9391

Toll Free (US Only): 1-800-391-9391

By Email - help@b3pe.com

By Website - www.b3pe.com



Bradley B Bean PE

ENGINEERING & SOFTWARE

Revision - 003, Copyright 2015, All Rights Reserved.